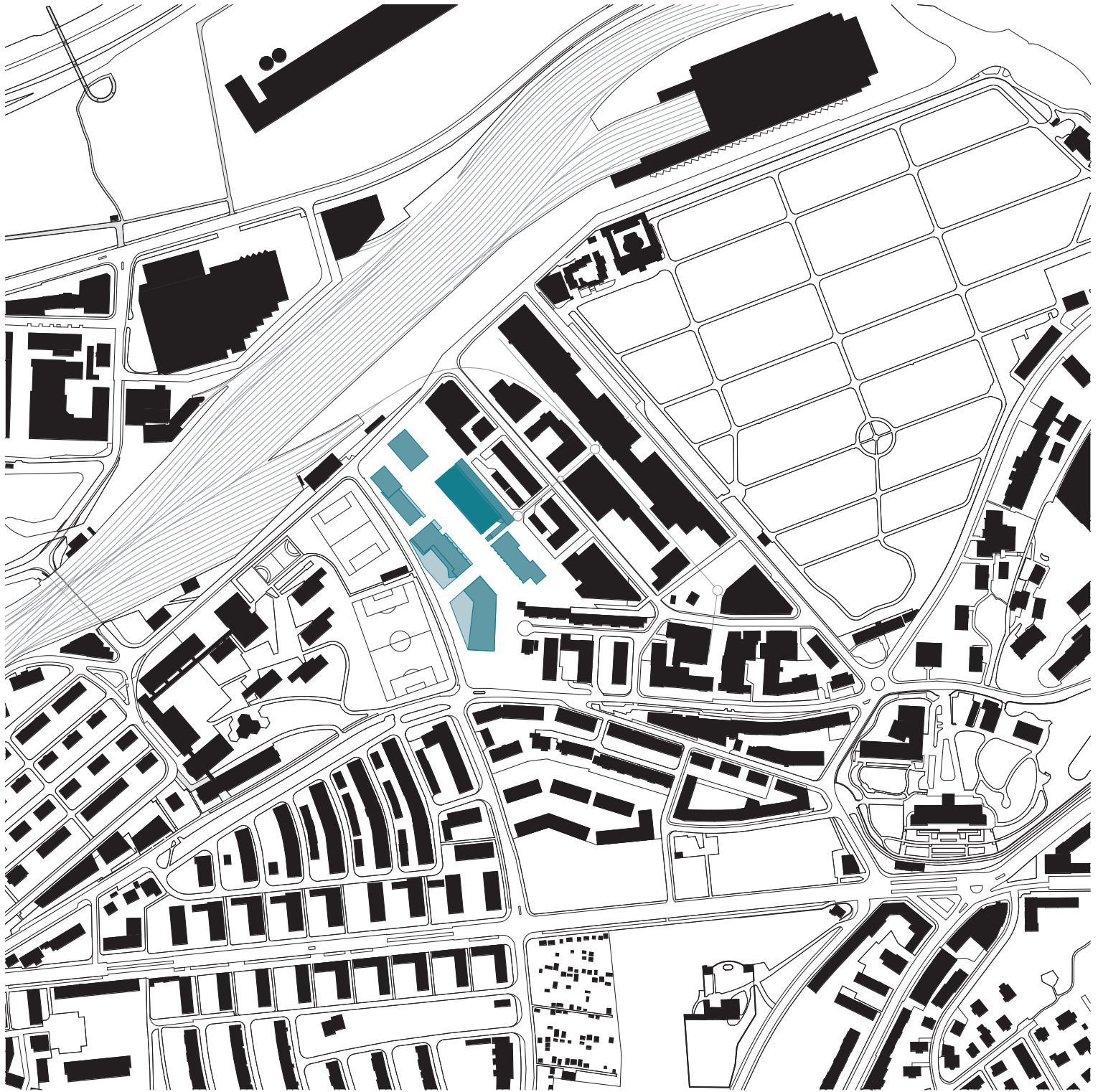


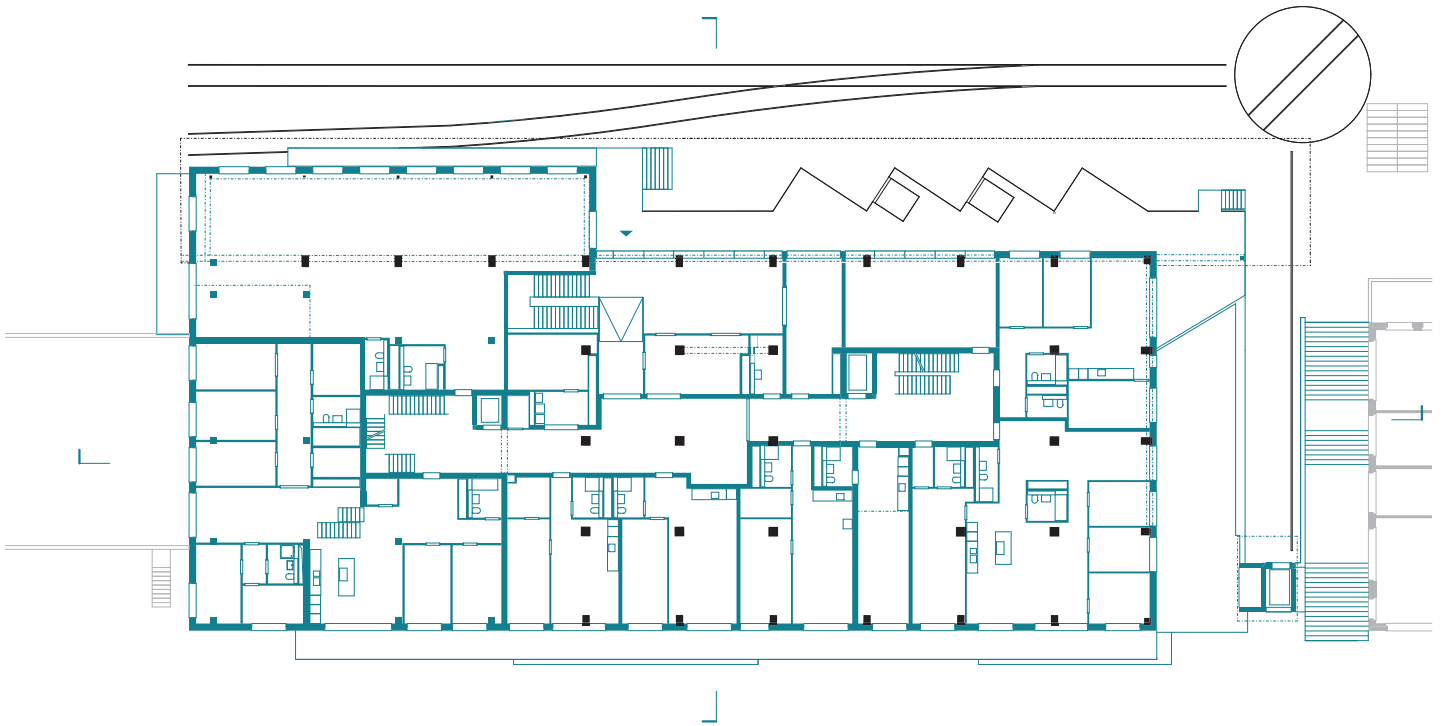
Güterstrasse 8, Bern - Umnutzung und Aufstockung eines Lagergebäudes

Auszeichnung Berner Baukultur

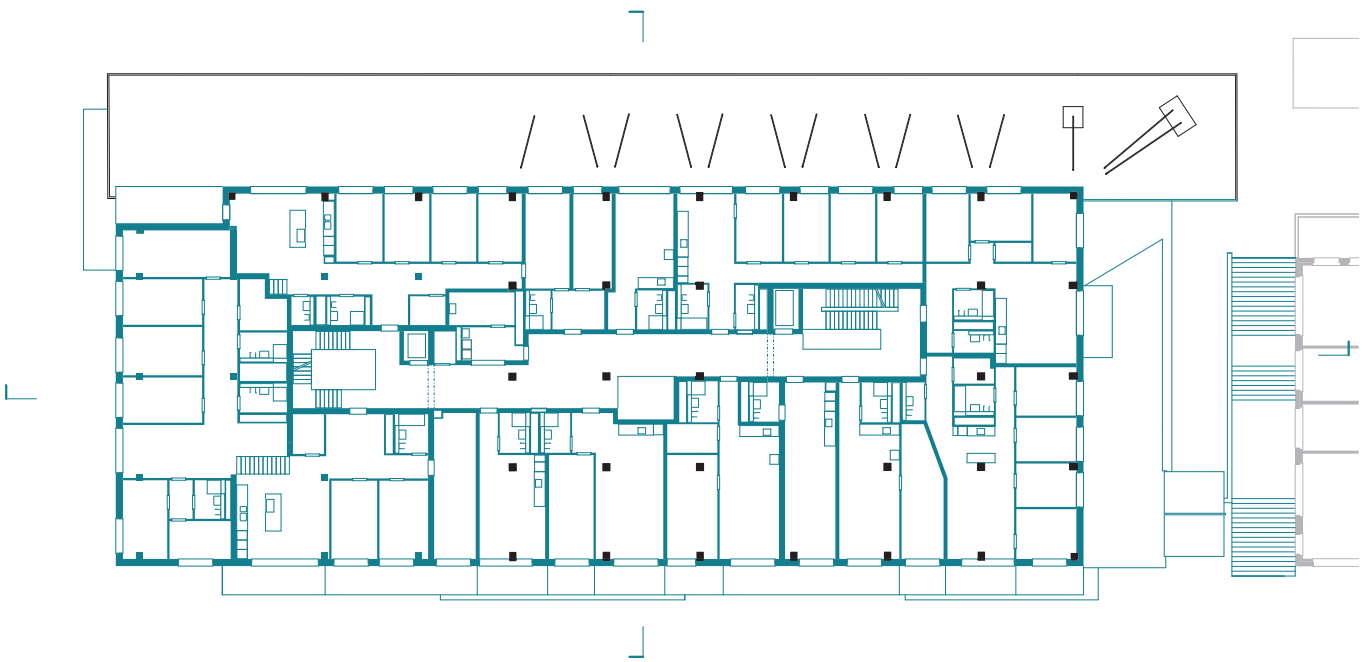
Eingabe 2024



Situationsplan 1:5000



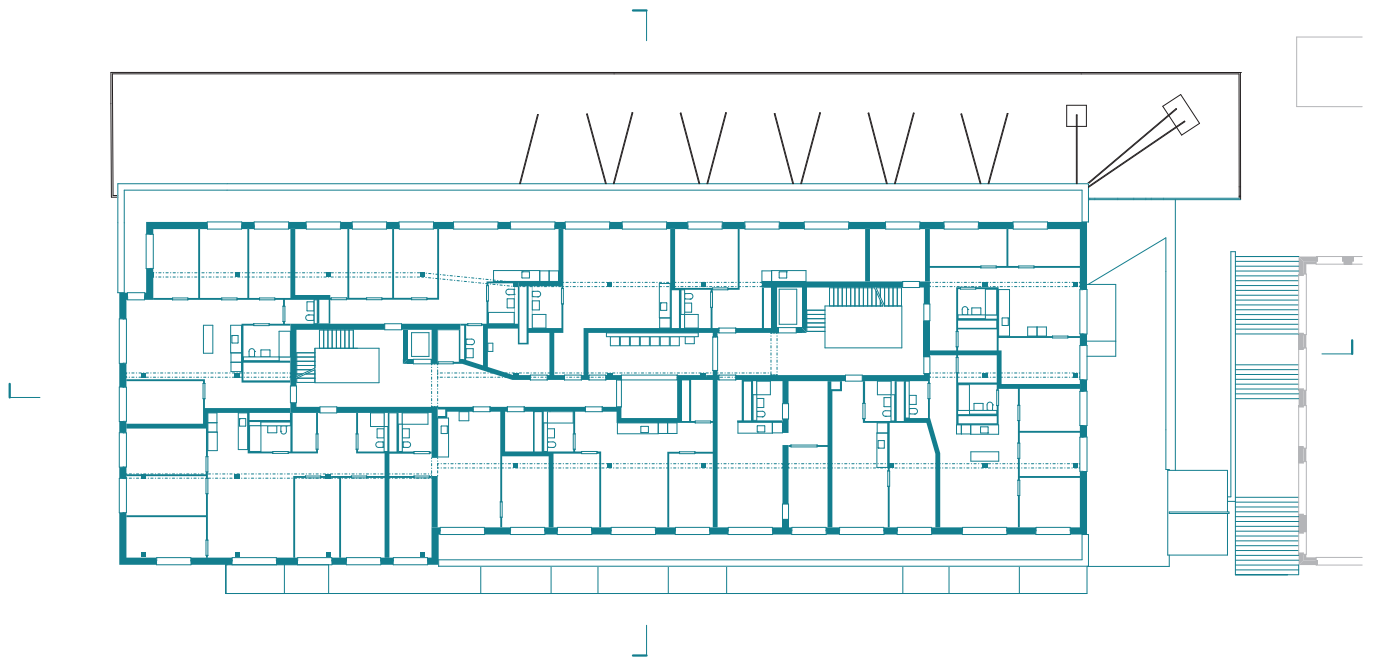
Erdgeschoss / Niveau 0 (Bestand), 1:500



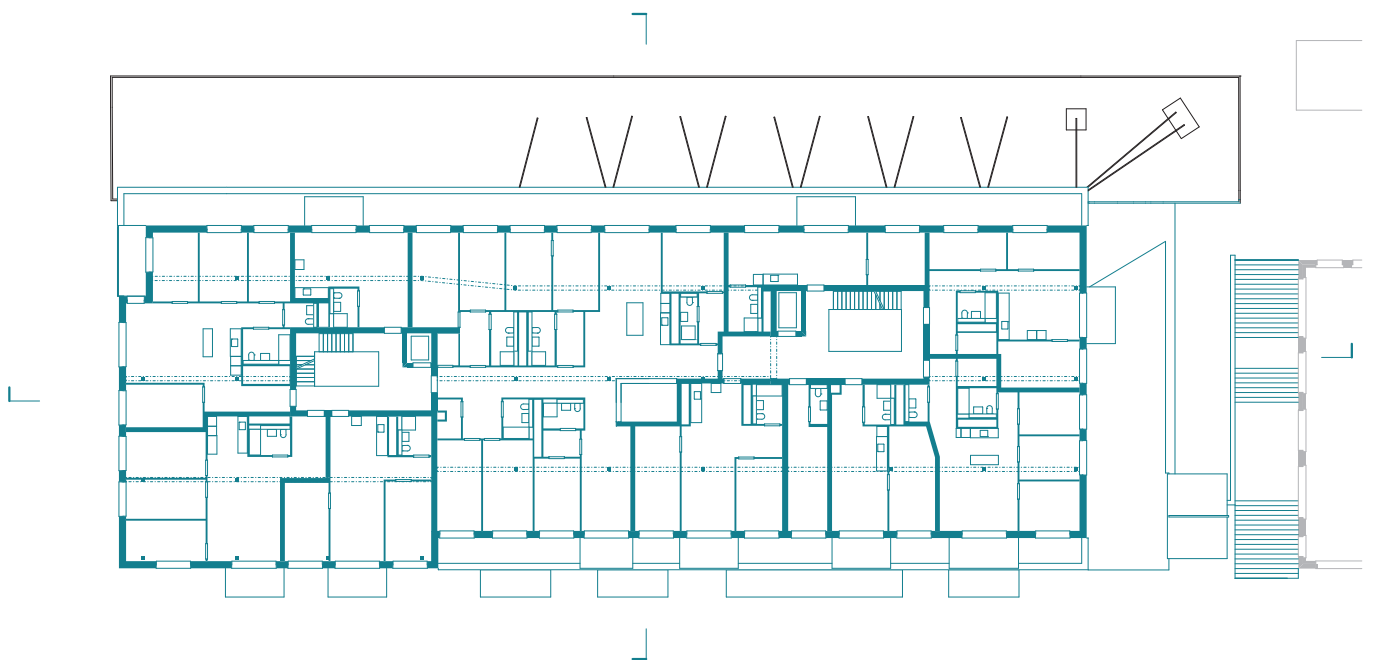
1. Obergeschoss / Niveau +1 (Bestand), 1:500

0 1 2 3 4 5





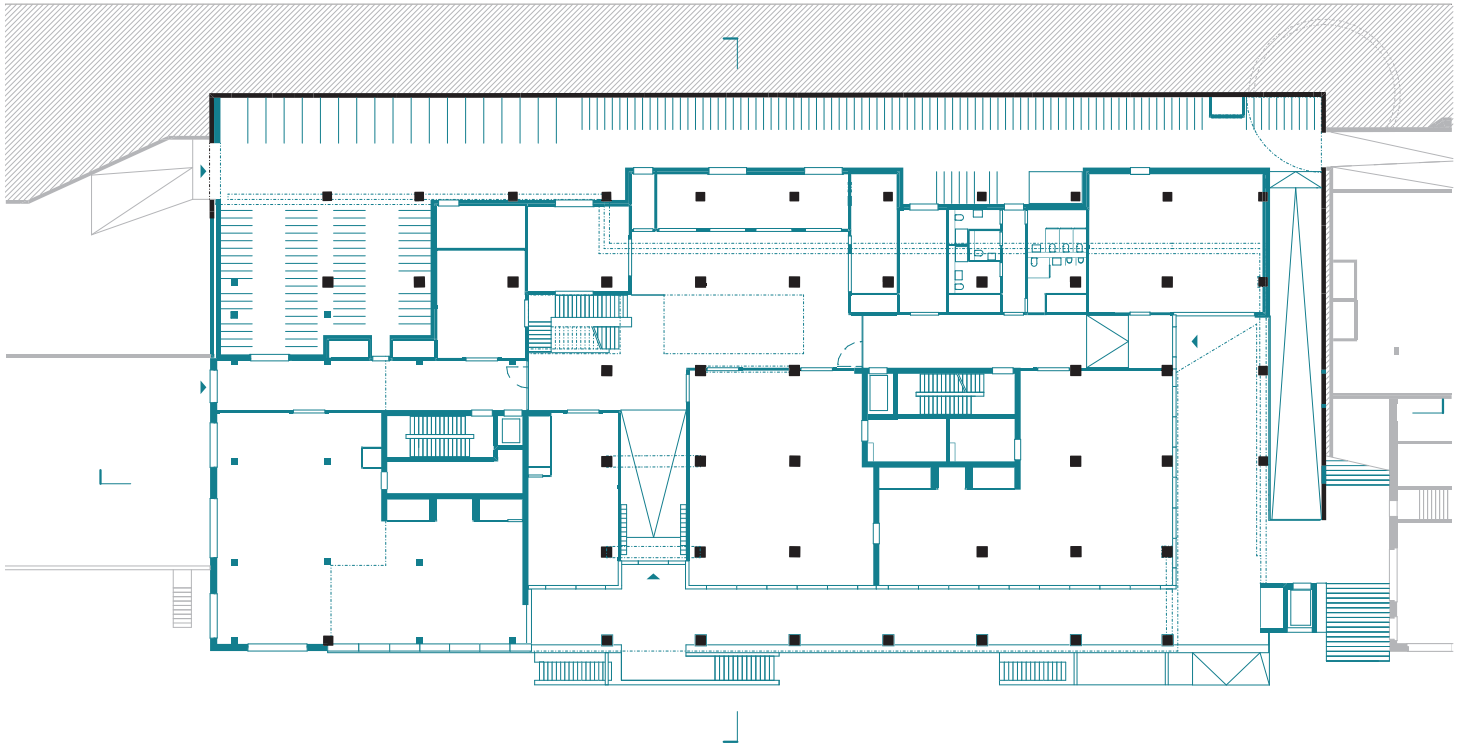
3. Obergeschoss / Niveau +3 (Aufstockung), 1:500



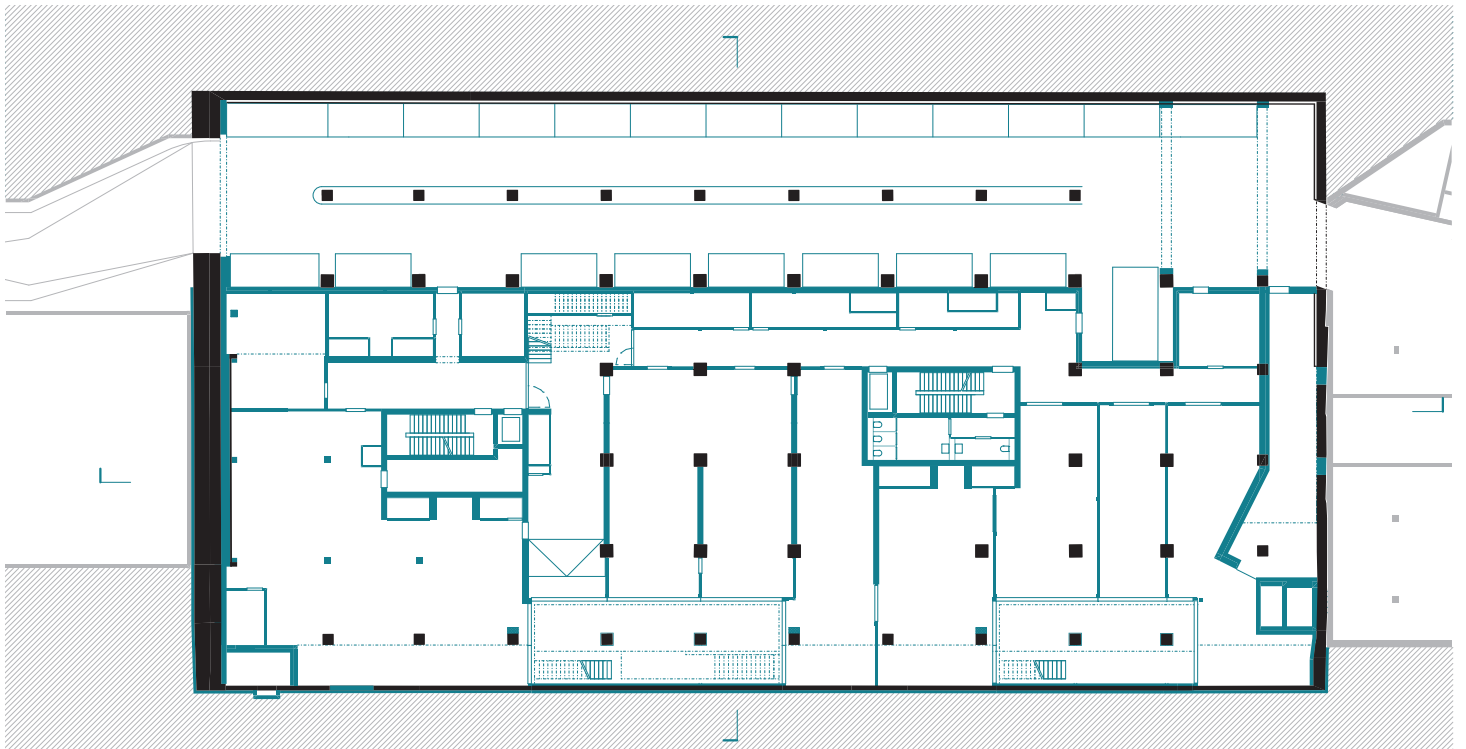
4./5. Obergeschoss / Niveau +4/+5 (Aufstockung), 1:500

0 1 2 3 4 5





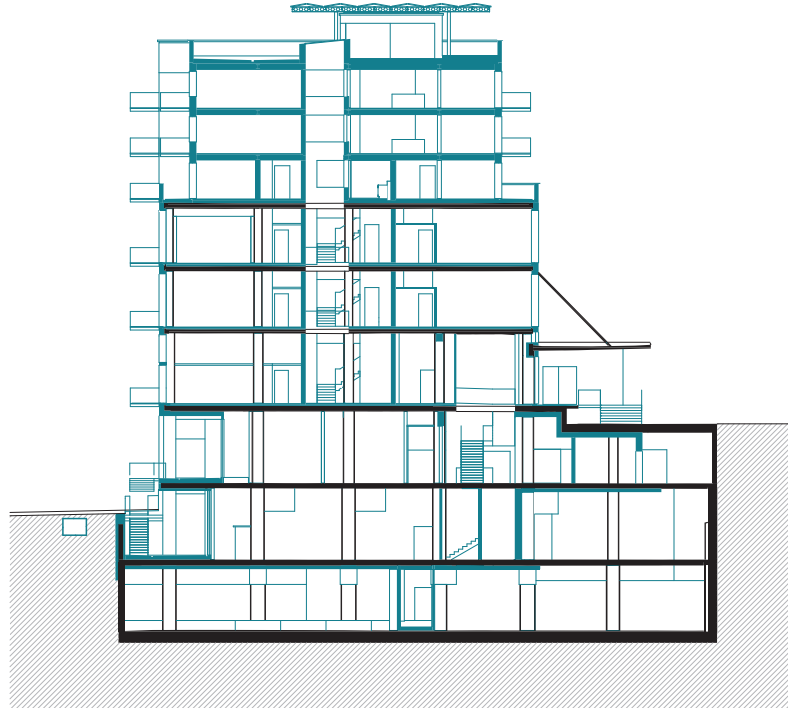
oberes Hofgeschoss / Niveau -1 (Bestand), 1:500



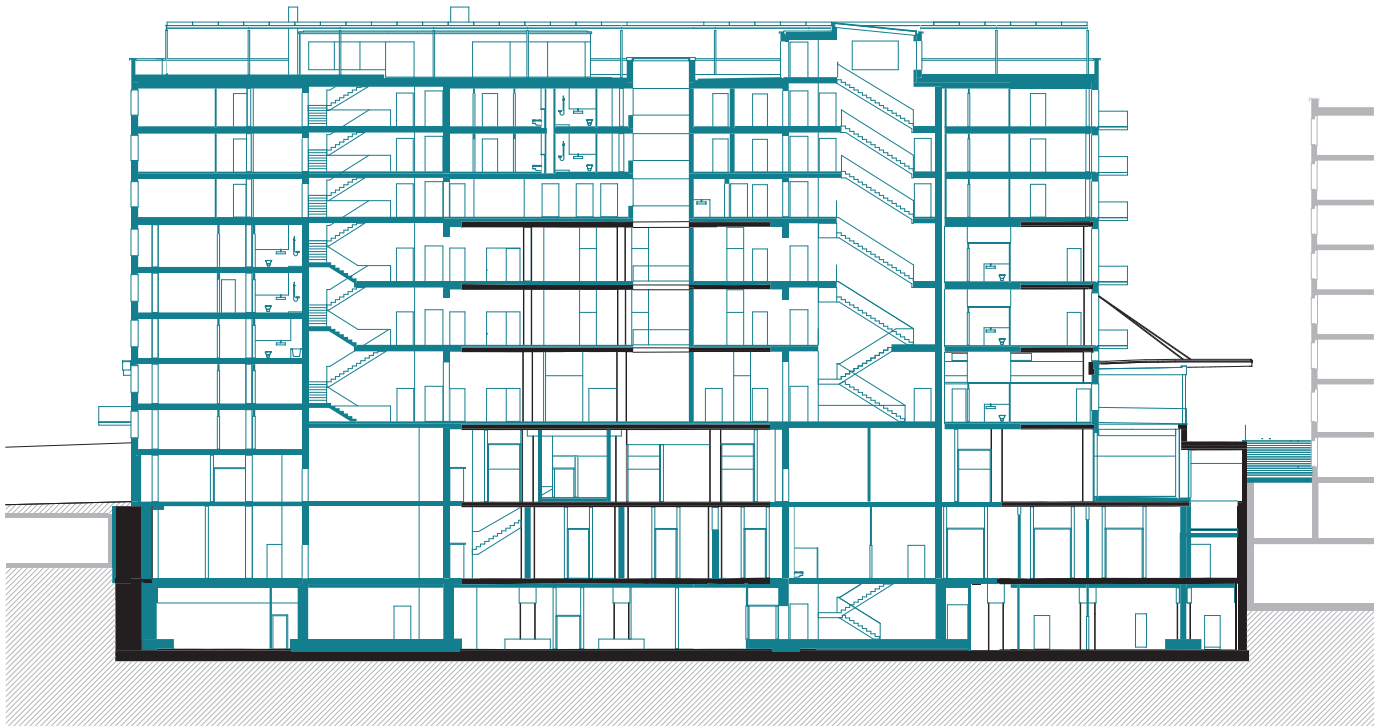
unteres Hofgeschoss / Niveau -2 (Bestand), 1:500

0 1 2 3 4 5





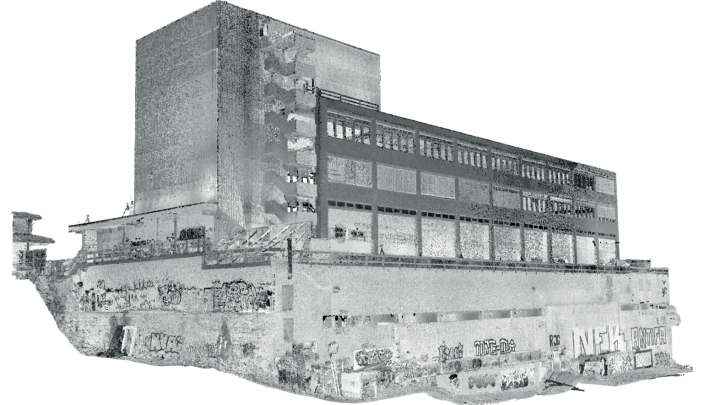
Querschnitt, 1:500



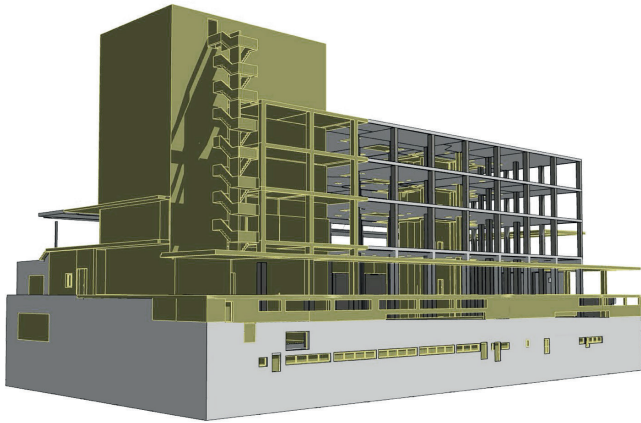
Längsschnitt, 1:500



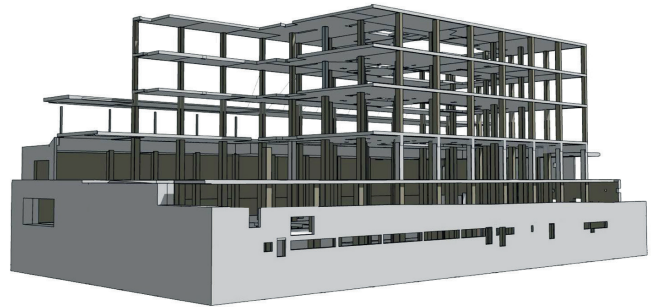
Bestandsgebäude



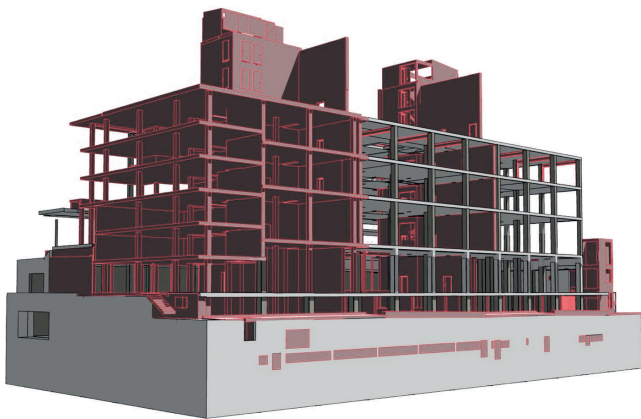
digitales Gebäudeaufmass



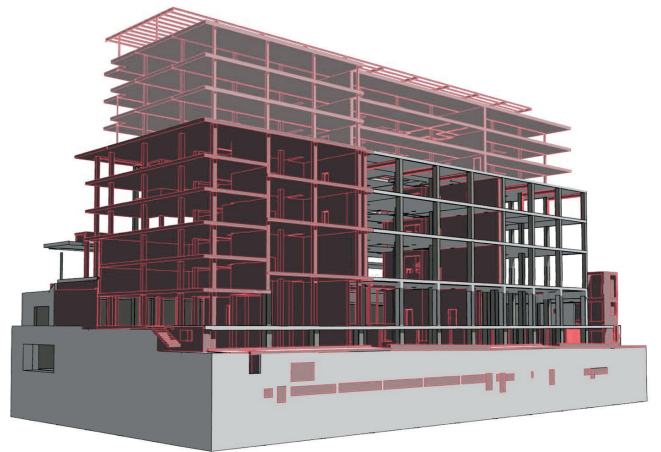
abgebrochene Bestandsstruktur



erhaltene Bestandsstruktur



Ergänzung der Struktur und Erdbebenaussteifung



Aufstockung als Holzbau